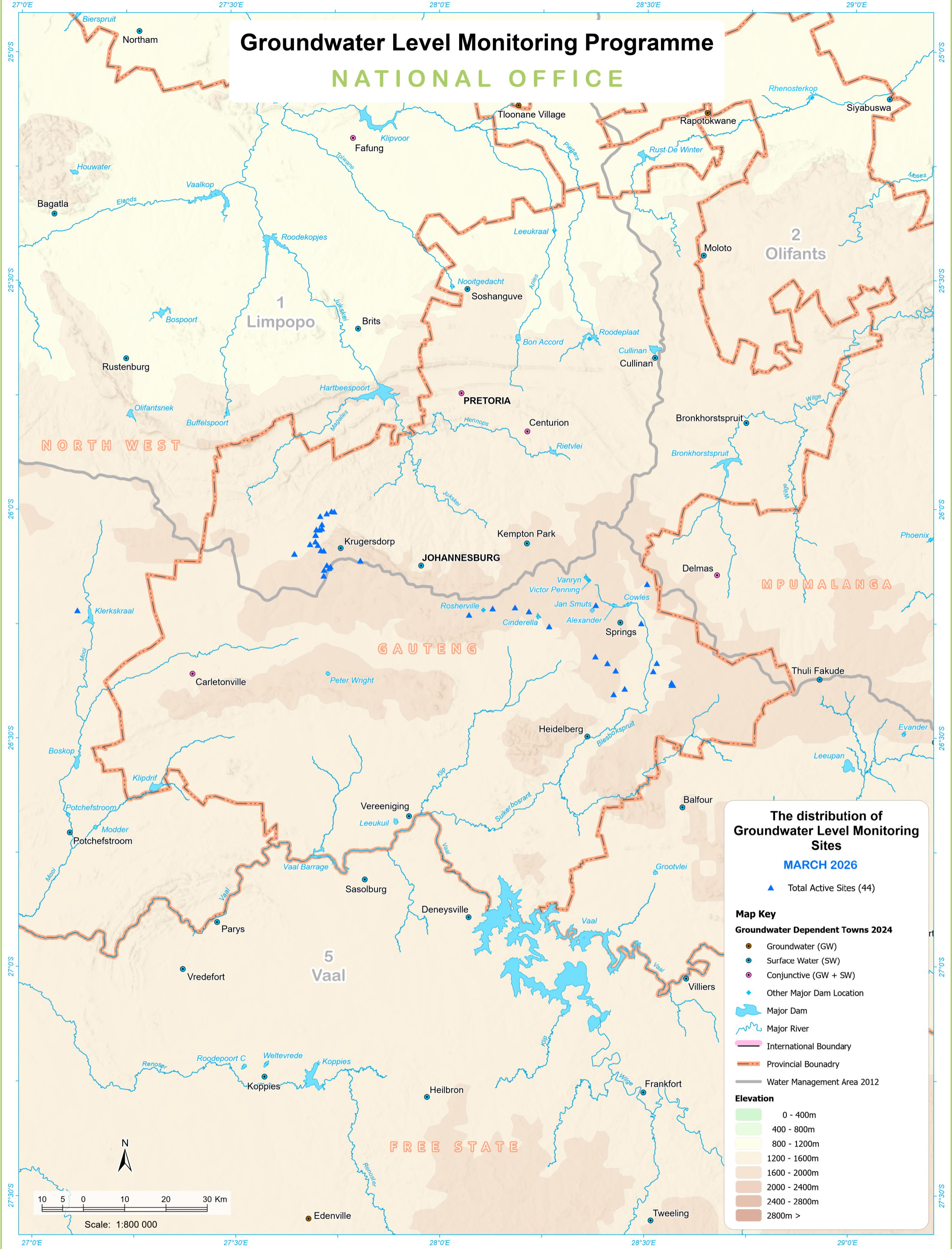


Groundwater Level Monitoring Programme

NATIONAL OFFICE



The distribution of Groundwater Level Monitoring Sites
MARCH 2026

- ▲ Total Active Sites (44)

Map Key

Groundwater Dependent Towns 2024

- Groundwater (GW)
- Surface Water (SW)
- Conjunctive (GW + SW)
- ◆ Other Major Dam Location
- Major Dam
- ▬ Major River
- ▬ International Boundary
- ▬ Provincial Boundary
- ▬ Water Management Area 2012

Elevation

- 0 - 400m
- 400 - 800m
- 800 - 1200m
- 1200 - 1600m
- 1600 - 2000m
- 2000 - 2400m
- 2400 - 2800m
- 2800m >

Data sources:
 Towns, Rivers, Dams, Elevation and International Boundaries - Department of Agriculture, Land Reform and Rural Development (DALRRD),
 Chief Directorate: National Geospatial Information (NGI);
 National Groundwater Archive (NGA) & Water Management Areas - Department of Water & Sanitation, Directorate: National Hydrological Services;
 Water Management System (WMS) - Department of Water & Sanitation, Directorate: Recourse Quality Information Services (RQIS).

Map produced by:
 Department of Water & Sanitation: Directorate: Spatial Information (SI); Sub-Directorate: Geographic Information and Archiving (GI&A) -
 Cartographic Services Unit. Map Date: Mar 2026 (Ref: GM26_004)